

EVERSTEEL



S059X-V20
Stainless Steel 6" Swing
Nozzle w/ 2.0 GPM Vandal
Resistant Aerator. VR Key
(Included)

This Space for Architect/Engineer Approval

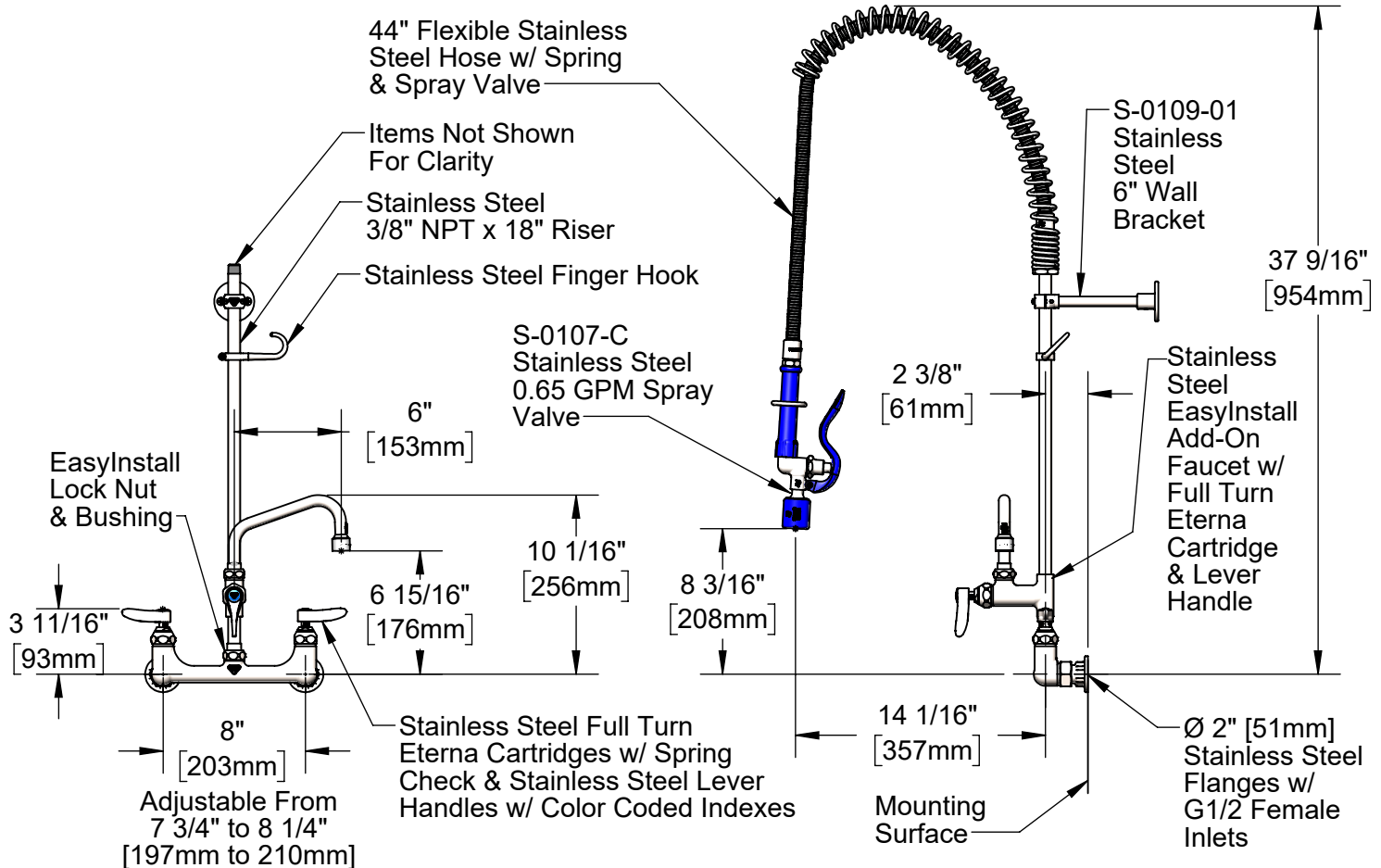
Job Name _____ Date _____

Model Specified _____ Quantity _____

Customer/Wholesaler _____

Contractor _____

Architect/Engineer _____

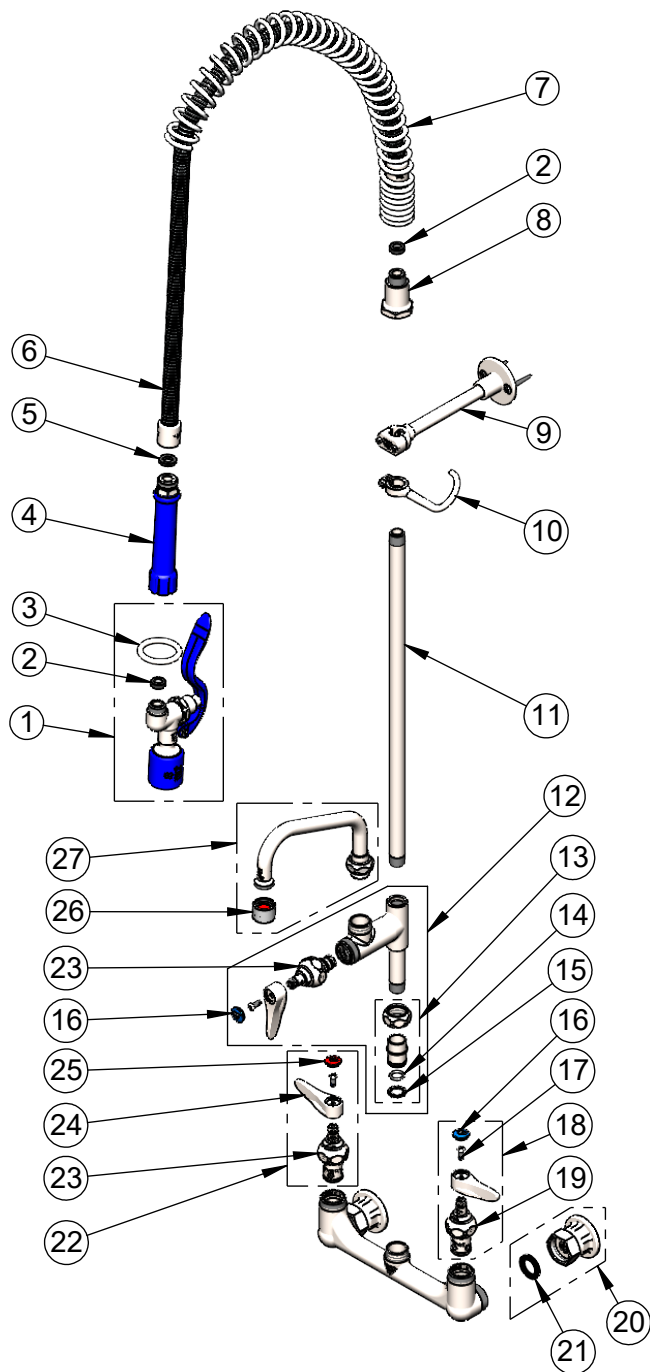


Product Specifications:

Pre-Rinse Unit: EasyInstall 8" Stainless Steel Wall Mount Mixing Faucet, SS Full Turn Eterna Cartridges w/ Spring Checks, SS Lever Handles, SS Add-On Faucet, SS 6" Swing Nozzle w/ 2.0 GPM VR Aerator, 44" Flexible Stainless Steel Hose, SS 0.65 GPM Spray Valve, SS 6" Wall Bracket & SS G1/2 Female Inlets

Product Compliance:

ASME A112.18.1 / CSA B125.1
NSF 61 - Section 9
NSF 372 (Low Lead Content)
AS/NZ WaterMark / WELS



015425-45
Vandal Resistant Key
(Included)

| ITEM NO. | SALES NO. | DESCRIPTION |
|----------|---------------|---|
| 1 | S-0107-C | Stainless Steel 0.65 GPM Spray Valve (Blue) |
| 2 | 010476-45 | #27 Washer |
| 3 | S000907-30 | Stainless Steel Spray Valve Hold Down Ring |
| 4 | S011482-30 | Stainless Steel Grip Handle (Blue) |
| 5 | 001014-45 | Washer, Hose Barrel |
| 6 | S-0044-H2A | 44" Flexible Stainless Steel Hose, Less Handle |
| 7 | S000888-30 | Stainless Steel EasyInstall Overhead Spring |
| 8 | S000821-30 | Stainless Steel Spring Body |
| 9 | S-0109-01 | Stainless Steel 6" Wall Bracket |
| 10 | S004R | Stainless Steel Finger Hook |
| 11 | S000369-30 | Stainless Steel 3/8" NPT x 18" Riser |
| 12 | AS-0155-LNEZ | Stainless Steel EasyInstall Add-On Faucet w/ Full Turn Eterna Cartridge & Lever Handle, Less Nozzle |
| 13 | SEZ-K | Stainless Steel EasyInstall Kit: Nut, Bushing, O-ring & Lock Washer |
| 14 | 001065-45 | O-Ring |
| 15 | 014200-45 | Star Washer, Anti-Rotation |
| 16 | 018506-19NS | Blue Button Index, Press-in |
| 17 | 000925-45 | Lab Handle Screw |
| 18 | S002711-30FT | Stainless Steel Full Turn Eterna Cartridge w/ Spring Check, Handle, Blue Index & Screw, LTC |
| 19 | S012442-30FT | Stainless Steel Full Turn Eterna Cartridge w/ Spring Check, LTC |
| 20 | S00AA-G12 | G1/2 Female Eccentric SS Flange |
| 21 | 010569-45 | Washer, Inlet Flange Coupling (UK) |
| 22 | S002712-30FT | Stainless Steel Full Turn Eterna Cartridge w/ Spring Check, Handle, Red Index & Screw, RTC |
| 23 | S012443-30FT | Stainless Steel Full Turn Eterna Cartridge w/ Spring Check, RTC |
| 24 | S001638-30NS | Lever Handle (New Style) |
| 25 | 001193-19NS | Red Button Index, Press-in |
| 26 | S-0199-06-F20 | VR 2.0 GPM [7.6 L/min] Aerator, 55/64-27 Female w/ Key |
| 27 | S059X-V20 | Stainless Steel 6" Swing Nozzle |

Product Specifications:

Pre-Rinse Unit: EasyInstall 8" Stainless Steel Wall Mount Mixing Faucet, SS Full Turn Eterna Cartridges w/ Spring Checks, SS Lever Handles, SS Add-On Faucet, SS 6" Swing Nozzle w/ 2.0 GPM VR Aerator, 44" Flexible Stainless Steel Hose, SS 0.65 GPM Spray Valve, SS 6" Wall Bracket & SS G1/2 Female Inlets

Product Compliance:

ASME A112.18.1 / CSA B125.1
NSF 61 - Section 9
NSF 372 (Low Lead Content)
AS/NZ WaterMark / WELS